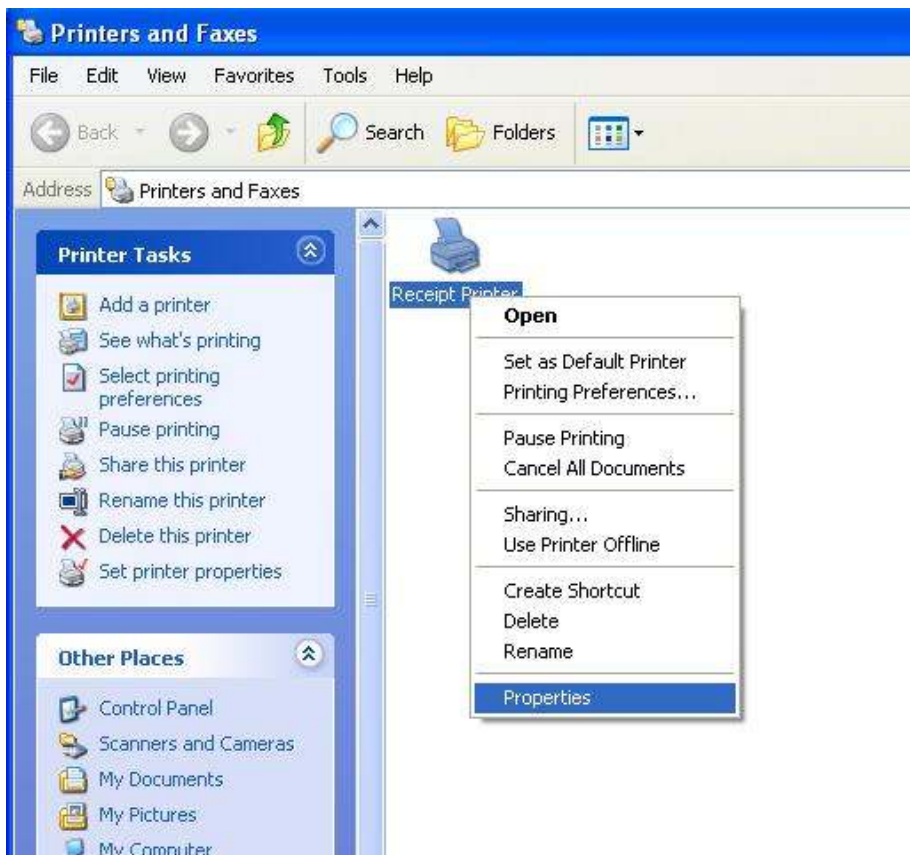


Receipt Printer Ethernet port setup manual

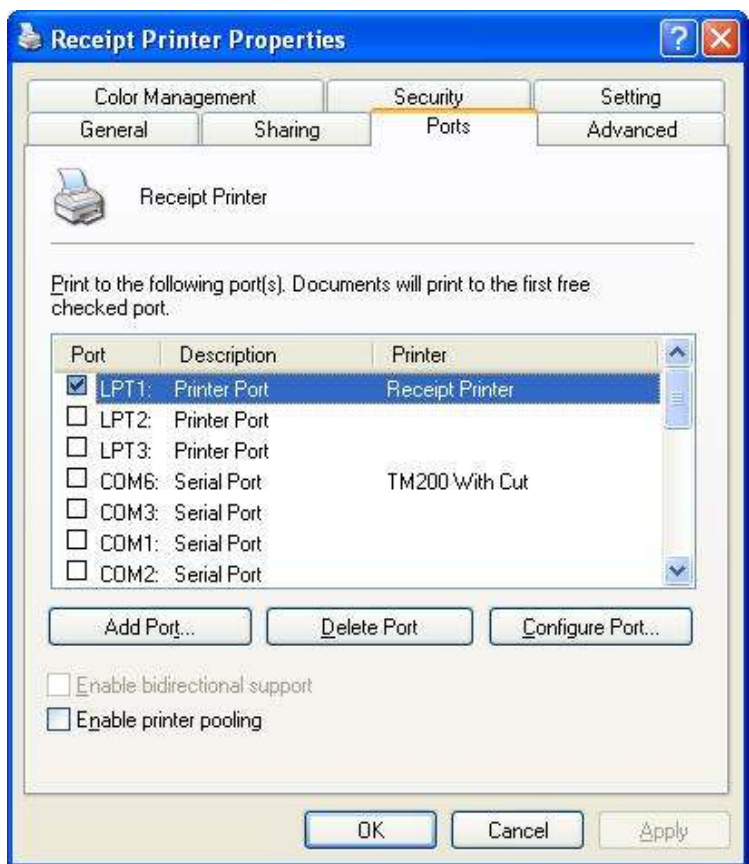
Step 1. Add new port

(i) Setup "Properties"

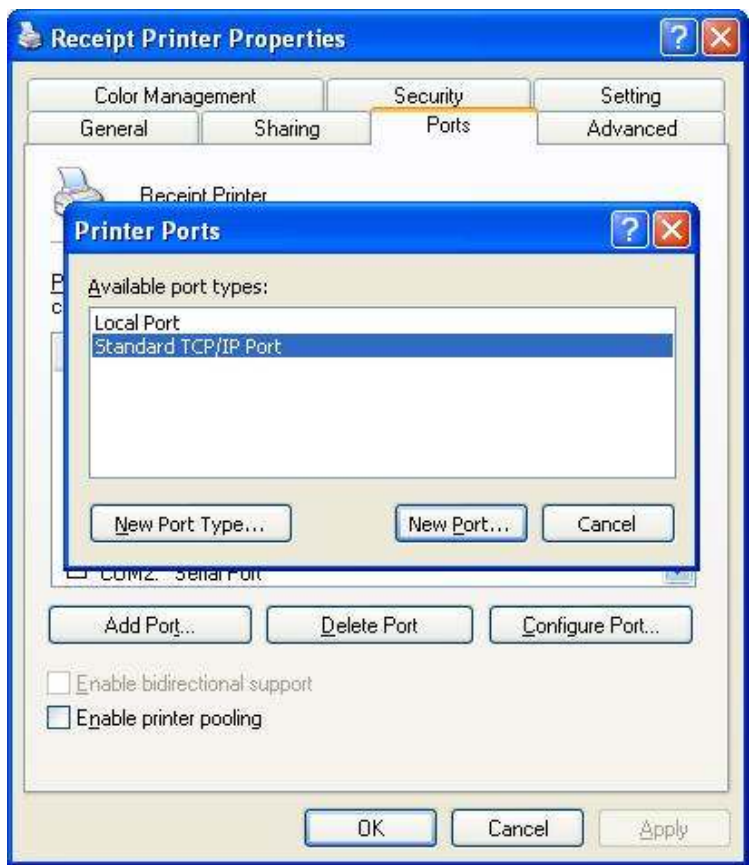


Receipt Printer Ethernet port setup manual

(ii) Click "Add Port..."



(iii) Select "Standard TCP/IP Port" and Click "New Port..."

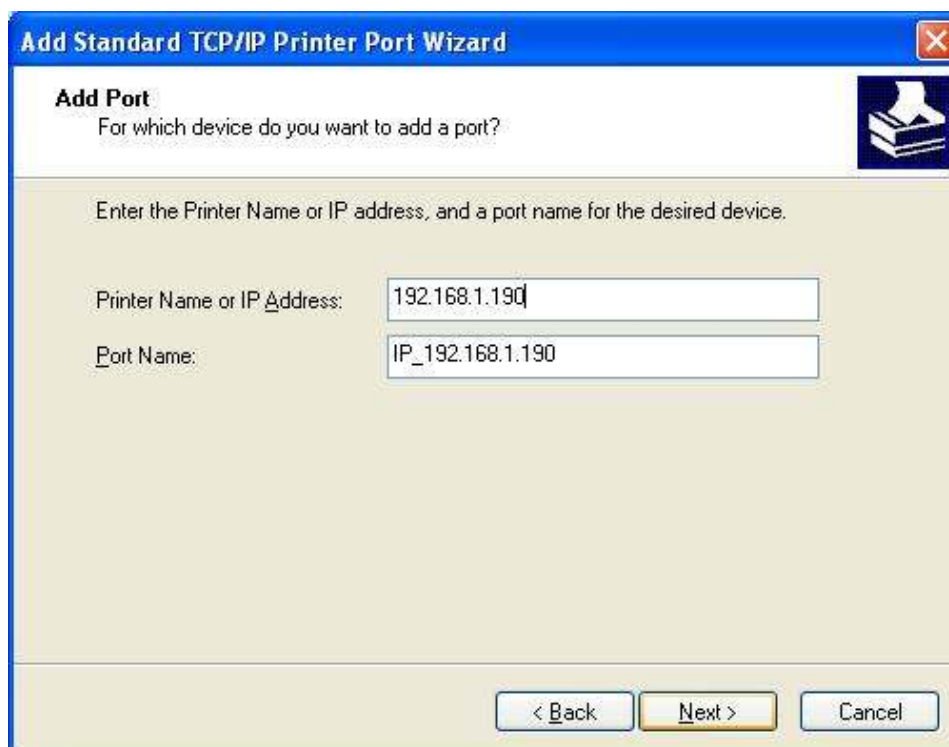


Receipt Printer Ethernet port setup manual

(iv) “Next”



(v) Input the IP Address configured in “Step 1.”



Receipt Printer Ethernet port setup manual

- (vi) Select “Standard – Generic Network Card” and click “Next”

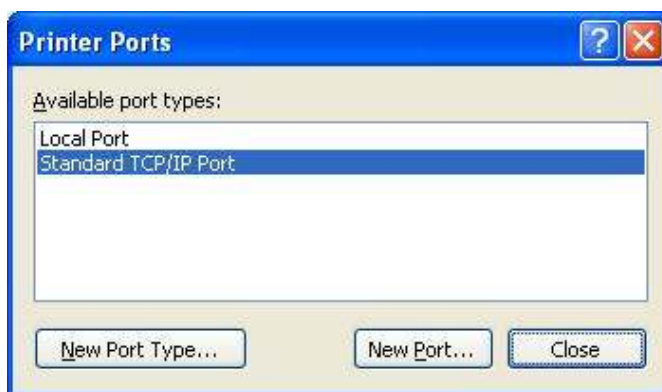


- (vii) Click “Finish”



Receipt Printer Ethernet port setup manual

(viii) Click "Close"



(ix) Click "Apply and it's OK!"

